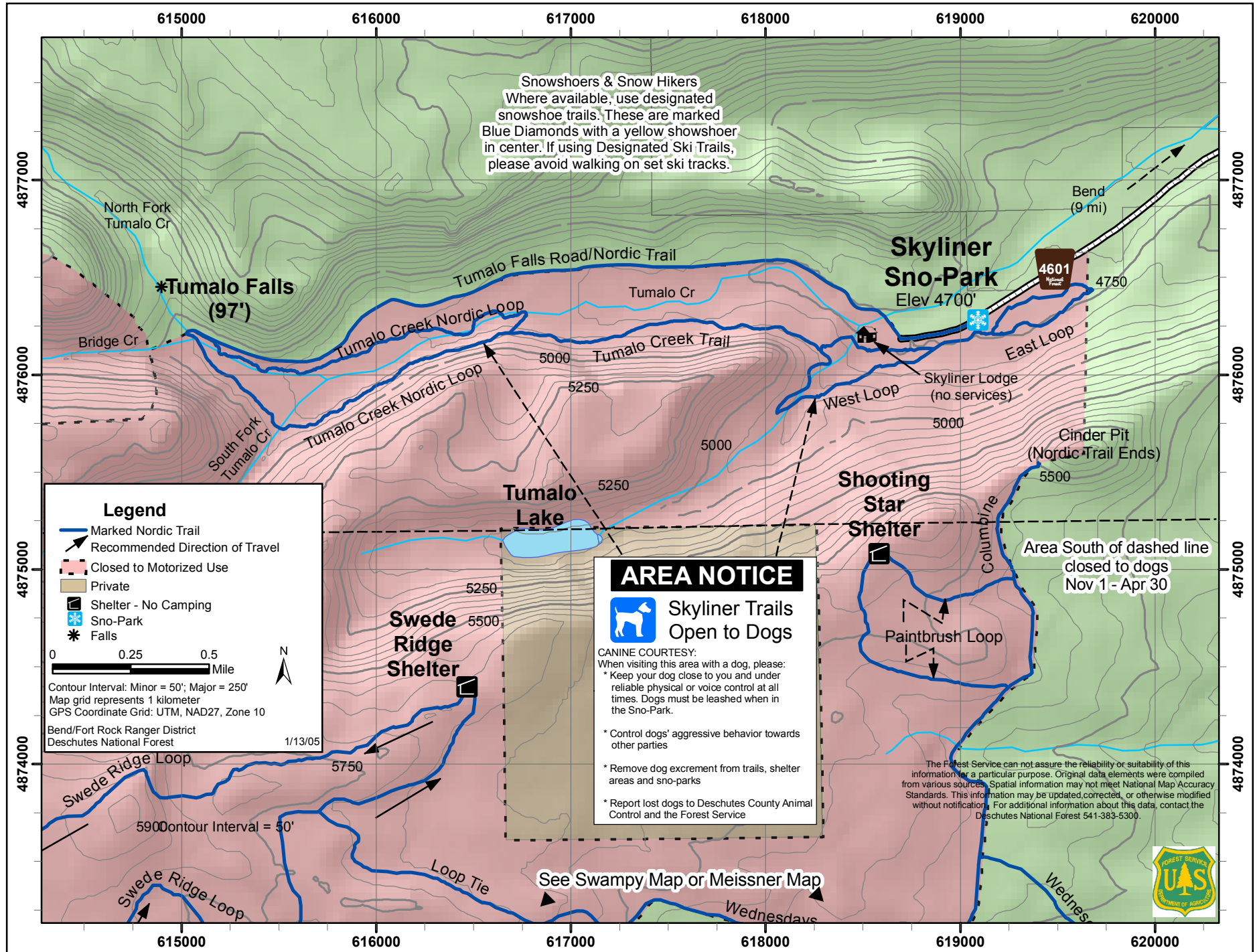


# Skyliner Sno-Park Area NORDIC SKI TRAILS



Snowshoers & Snow Hikers  
 Where available, use designated snowshoe trails. These are marked Blue Diamonds with a yellow snowshoer in center. If using Designated Ski Trails, please avoid walking on set ski tracks.

**Legend**

- Marked Nordic Trail
- Recommended Direction of Travel
- Closed to Motorized Use
- Private
- Shelter - No Camping
- Sno-Park
- Falls

0 0.25 0.5  
 Mile

Contour Interval: Minor = 50'; Major = 250'  
 Map grid represents 1 kilometer  
 GPS Coordinate Grid: UTM, NAD27, Zone 10  
 Bend/Fort Rock Ranger District  
 Deschutes National Forest

1/13/05

**AREA NOTICE**

Skyliner Trails Open to Dogs

CANINE COURTESY:  
 When visiting this area with a dog, please:

- \* Keep your dog close to you and under reliable physical or voice control at all times. Dogs must be leashed when in the Sno-Park.
- \* Control dogs' aggressive behavior towards other parties
- \* Remove dog excrement from trails, shelter areas and sno-parks
- \* Report lost dogs to Deschutes County Animal Control and the Forest Service

The Forest Service can not assure the reliability or suitability of this information for a particular purpose. Original data elements were compiled from various sources. Spatial information may not meet National Map Accuracy Standards. This information may be updated, corrected, or otherwise modified without notification. For additional information about this data, contact the Deschutes National Forest 541-383-5300.



See Swampy Map or Meissner Map