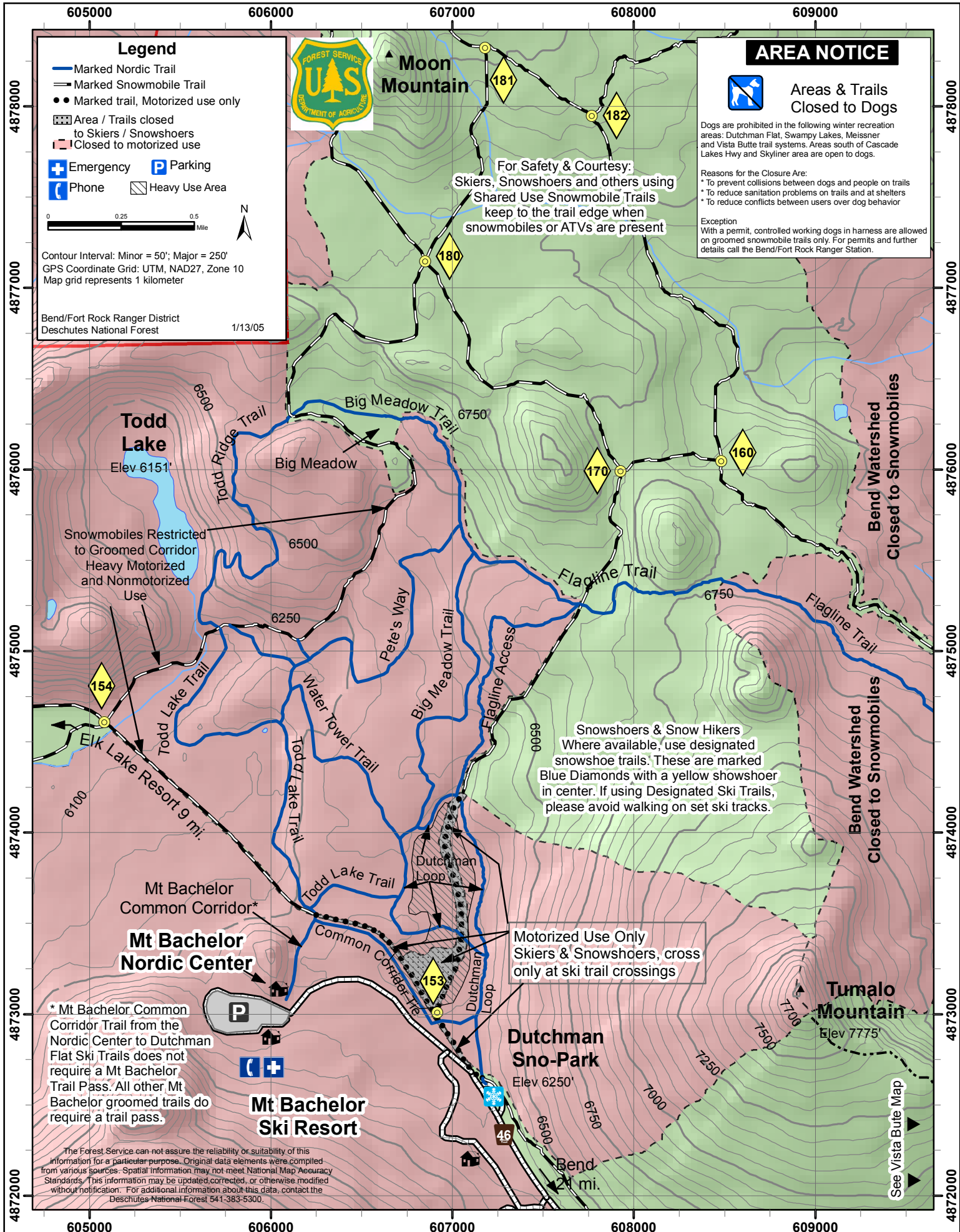


# Dutchman Flat Area NORDIC SKI TRAILS



**Legend**

- Marked Nordic Trail
- Marked Snowmobile Trail
- Marked trail, Motorized use only
- ▨ Area / Trails closed to Skiers / Snowshoers
- ▨ Closed to motorized use
- ⊕ Emergency
- Ⓟ Parking
- ☎ Phone
- ▨ Heavy Use Area

0 0.25 0.5 Mile

Contour Interval: Minor = 50'; Major = 250'  
GPS Coordinate Grid: UTM, NAD27, Zone 10  
Map grid represents 1 kilometer

Bend/Fort Rock Ranger District  
Deschutes National Forest  
1/13/05

**AREA NOTICE**

**Areas & Trails Closed to Dogs**

Dogs are prohibited in the following winter recreation areas: Dutchman Flat, Swampy Lakes, Meissner and Vista Butte trail systems. Areas south of Cascade Lakes Hwy and Skyliner area are open to dogs.

Reasons for the Closure Are:

- \* To prevent collisions between dogs and people on trails
- \* To reduce sanitation problems on trails and at shelters
- \* To reduce conflicts between users over dog behavior

Exception  
With a permit, controlled working dogs in harness are allowed on groomed snowmobile trails only. For permits and further details call the Bend/Fort Rock Ranger Station.

For Safety & Courtesy:  
Skiers, Snowshoers and others using Shared Use Snowmobile Trails keep to the trail edge when snowmobiles or ATVs are present

Snowshoers & Snow Hikers  
Where available, use designated snowshoe trails. These are marked Blue Diamonds with a yellow snowshoer in center. If using Designated Ski Trails, please avoid walking on set ski tracks.

Motorized Use Only  
Skiers & Snowshoers, cross only at ski trail crossings

\* Mt Bachelor Common Corridor Trail from the Nordic Center to Dutchman Flat Ski Trails does not require a Mt Bachelor Trail Pass. All other Mt Bachelor groomed trails do require a trail pass.

The Forest Service can not assure the reliability or suitability of this information for a particular purpose. Original data elements were compiled from various sources. Spatial information may not meet National Map Accuracy Standards. This information may be updated, corrected, or otherwise modified without notification. For additional information about this data, contact the Deschutes National Forest 541-383-5300.

See Vista Butte Map